

SIMPSON DOOR CO.

MAHOGANY INSWING DOOR W/ & W/O SIDELITES & TRANSOM

INSTALLATION ANCHORAGE DETAILS

GENERAL NOTES:

1. THIS PRODUCT IS DESIGNED TO COMPLY WITH THE CURRENT EDITION OF THE FLORIDA BUILDING CODE - BUILDING (FBC) AND RESIDENTIAL (FRC) REQUIREMENTS EXCLUDING THE HIGH VELOCITY HURRICANE ZONE (HVHZ) AT THE DESIGN PRESSURE(S) STATED HEREIN. THE PRODUCT DETAILS CONTAINED HEREIN ARE BASED UPON SIGNED AND SEALED TEST REPORT # NCTL-210-4190-1 AND ASSOCIATED LABORATORY STAMPED DRAWINGS.
2. ADEQUACY OF THE EXISTING STRUCTURAL CONCRETE / MASONRY AND 2X FRAMING AS A MAIN WIND FORCE RESISTING SYSTEM CAPABLE OF WITHSTANDING AND TRANSFERRING APPLIED PRODUCT LOADS TO THE STRUCTURE IS THE RESPONSIBILITY OF THE ENGINEER OR ARCHITECT OF RECORD.
3. 1X AND 2X BUCKS (WHEN USED) SHALL BE DESIGNED AND ANCHORED TO PROPERLY TRANSFER ALL LOADS TO THE STRUCTURE. BUCK DESIGN AND INSTALLATION IS THE RESPONSIBILITY OF THE ENGINEER OR ARCHITECT OF RECORD.
4. IN AREAS WHERE WIND-BORNE DEBRIS PROTECTION REQUIREMENTS EXIST, USE OF AN APPROVED IMPACT PROTECTIVE SYSTEM IS REQUIRED.
5. DOOR FRAME OR COMPONENTS STRUCTURAL CORE MATERIAL: LAMINATED VENEER LUMBER (LVL) AND/OR FIR OR PINE FINGERJOINTED AND EDGE GLUED CORE MATERIAL. USE OF ALTERNATE WOOD VENEERS ON THE SAME STRUCTURAL CORE MATERIAL IS ACCEPTABLE FOR THIS PRODUCT. LVL MAY BE EITHER VERTICAL OR HORIZONTAL ORIENTATION.
6. GLASS MEETS THE REQUIREMENTS OF ASTM E1300-12AE1.

7. DESIGNATIONS "X" AND "O" STAND FOR THE FOLLOWING:
X: OPERABLE PANEL
O: FIXED PANEL
8. PERIMETER AND JOINT SEALANT BY OTHERS TO BE DETAILED IN ACCORDANCE WITH THE FBC, RESIDENTIAL AND BUILDING VOLUMES AND WITH FMA/AAMA/WDMA PROTOCOLS. PERIMETER AND JOINT SEALANT IS SHOWN FOR ILLUSTRATIVE PURPOSES ONLY AND IS NOT PART OF THIS PRODUCT APPROVAL DOCUMENT.

INSTALLATION NOTES:

1. ONE (1) INSTALLATION ANCHOR IS REQUIRED AT EACH ANCHOR LOCATION SHOWN.
2. THE NUMBER OF INSTALLATION ANCHORS DEPICTED ARE THE MINIMUM NUMBER OF ANCHORS TO BE USED FOR PRODUCT INSTALLATION. ANCHORS ARE TO MATCH TYPE, SIZE, AND EMBEDMENT OF THOSE SHOWN HEREIN FOR RESPECTIVE SUBSTRATE.
3. SHIM AS REQUIRED AT EACH INSTALLATION ANCHOR WITH LOAD BEARING SHIM(S). MAXIMUM ALLOWABLE SHIM SIZE IS 1/4 INCH. SHIM WHERE SPACE OF 1/16 INCH OR GREATER OCCURS. SHIM(S) SHALL BE CONSTRUCTED OF HIGH DENSITY PLASTIC OR BETTER.
4. FOR INSTALLATION INTO WOOD FRAMING, USE #10 WOOD SCREWS OF SUFFICIENT LENGTH TO ACHIEVE 1 1/2 INCH MINIMUM EMBEDMENT. MINIMUM EDGE DISTANCE IS 3/4 INCHES.
5. FOR INSTALLATION THROUGH 1X BUCK TO CONCRETE / MASONRY, OR DIRECTLY INTO CONCRETE / MASONRY, USE 1/4 INCH ITW TAPCONS (ADVANCED THREADFORM) OF SUFFICIENT LENGTH TO ACHIEVE 1 3/4 INCH MINIMUM EMBEDMENT INTO CONCRETE AND 1 INCH MINIMUM EMBEDMENT INTO MASONRY. MINIMUM EDGE DISTANCE IS 2-1/2 INCHES FOR CONCRETE AND MASONRY.
6. MINIMUM EMBEDMENT AND EDGE DISTANCE EXCLUDE WALL FINISHES (INCLUDING BUT NOT LIMITED TO STUCCO, FOAM, BRICK VENEER AND SIDING).
7. FOR CONCRETE BLOCK, DO NOT INSTALL INSTALLATION ANCHORS INTO MORTAR JOINTS. EDGE DISTANCE IS MEASURED FROM FREE EDGE OF BLOCK OR EDGE OF MORTAR JOINT INTO FACE SHELL OF BLOCK.
8. INSTALLATION ANCHOR CAPACITIES FOR PRODUCTS HEREIN ARE BASED ON SUBSTRATE MATERIALS WITH THE FOLLOWING PROPERTIES:
 - 8.1 WOOD - MINIMUM SPECIFIC GRAVITY OF 0.42 (NON-HVHZ).
 - 8.2 CONCRETE - MINIMUM COMPRESSIVE STRENGTH OF 2500 PSI.
 - 8.3 MASONRY - STRENGTH CONFORMANCE TO ASTM C-90 MEDIUM WEIGHT WITH COMPRESSIVE STRENGTH OF 1900 psi (DENSITY > 117 PCF).

TABLE OF CONTENTS		
SHEET	REV.	SHEET DESCRIPTION
1	---	GENERAL AND INSTALLATION NOTES
2	---	ELEVATION AND ANCHOR LAYOUT
3	---	ELEVATION AND ANCHOR LAYOUT
4	---	ELEVATION AND ANCHOR LAYOUT
5	---	ELEVATION AND ANCHOR LAYOUT
6	---	ELEVATION AND ANCHOR LAYOUT
7	---	ELEVATION AND ANCHOR LAYOUT
8	---	VERTICAL SECTIONS
9	---	VERTICAL SECTIONS
10	---	VERTICAL & HORIZONTAL SECTIONS, GLAZING DETAIL
11	---	HORIZONTAL SECTIONS

HARDWARE	DESIGN PRESSURE RATING (PSF)		IMPACT RATING
	WHERE WATER INFILTRATION REQUIREMENT IS NEEDED	WHERE WATER INFILTRATION REQUIREMENT IS NOT NEEDED	
SCHLAGE	N/A	±50.0	NONE
W & F	N/A	±50.0	

SIMPSON DOOR COMPANY 400 SIMPSON AVE. MCCLEARY, WA 98557 TITLE: MAHOGANY INSWING DOOR W/ & W/O SIDELITES & TRANSOM GENERAL AND INSTALLATION NOTES PREPARED BY:	PROJECT NO. 421-0102					
	DRAWN BY: RJA	DATE: 6/18/21	DRAWING NO: SIMP0021	SHEET: 1 OF 11	REV	DATE
	SCALE: N.T.S.	REV: ---				
	PTC Product Design Group, LLC PO Box 520775 Longwood, FL 32752-0775 Phone: 321.690.1788 Fax: 321.690.1789 Email: info@pdc-corp.com FBPE C.A. NO. 25935					

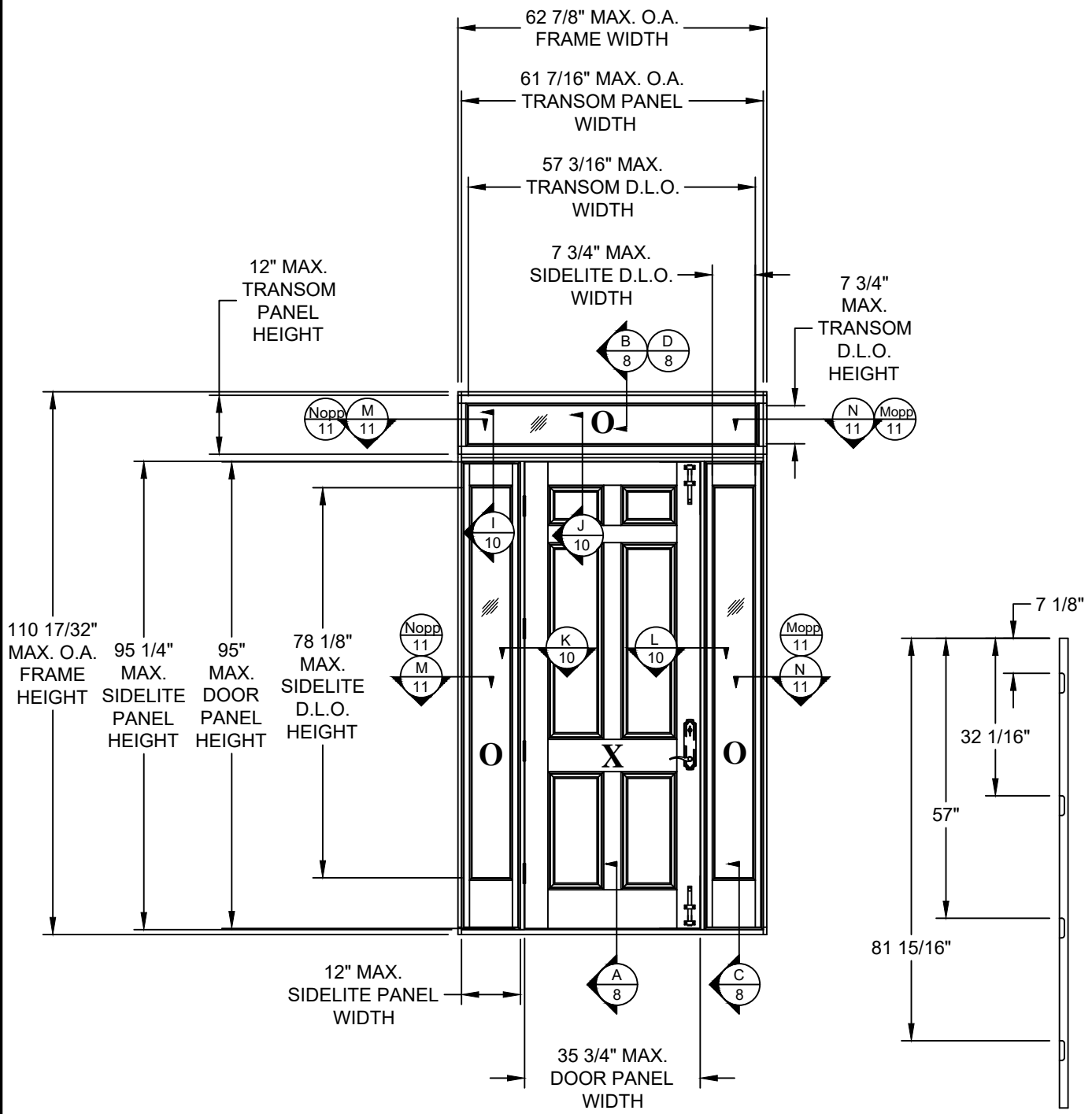
Robert J. Amoruso, P.E.
Florida P.E. No. 49752

PROJECT NO. 421-0102				

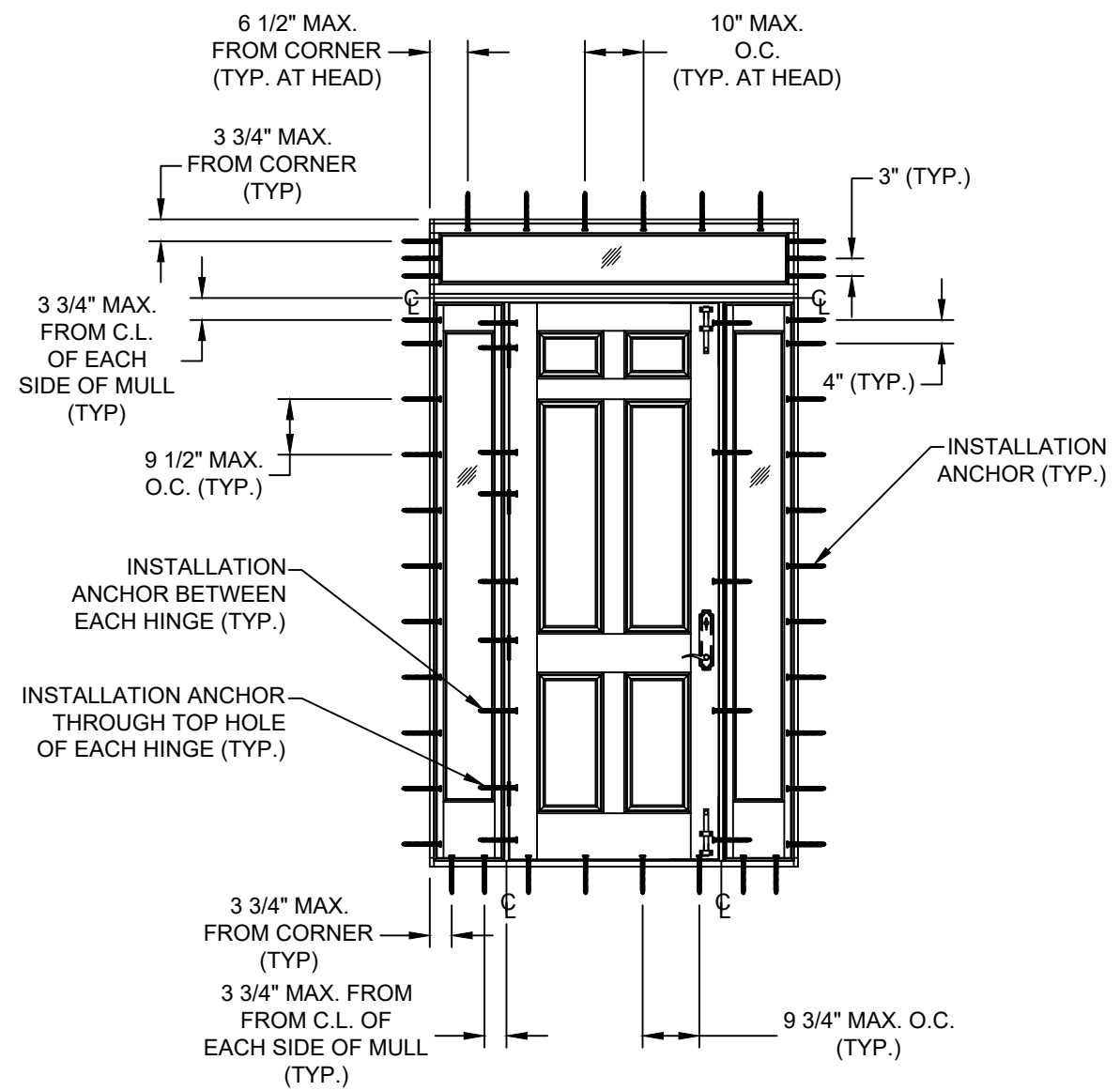
SIMPSON DOOR COMPANY 400 SIMPSON AVE. MCCLEARY, WA 98557 TITLE: MAHOGANY INSWING DOOR W/ & W/O SIDELITES & TRANSOM ELEVATION & ANCHOR LAYOUT	DATE:	6/18/21
	DRAWN BY:	RJA
	DRAWING NO.:	SIMP0021
	SHEET:	2 OF 11

PFC
 PFC Product Design Group, LLC
 PO Box 520775
 Longwood, FL 32752-0775
 Phone: 321.690.1788
 Fax: 321.690.1789
 Email: info@pfc-corp.com
 FBPE C.A. NO. 25935

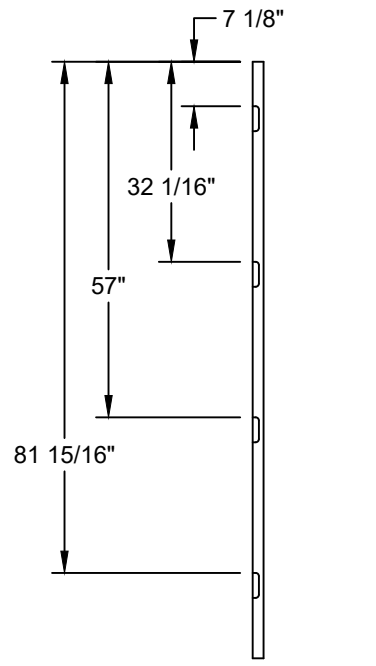
Robert J. Amoruso, P.E.
 Florida P.E. No. 49752



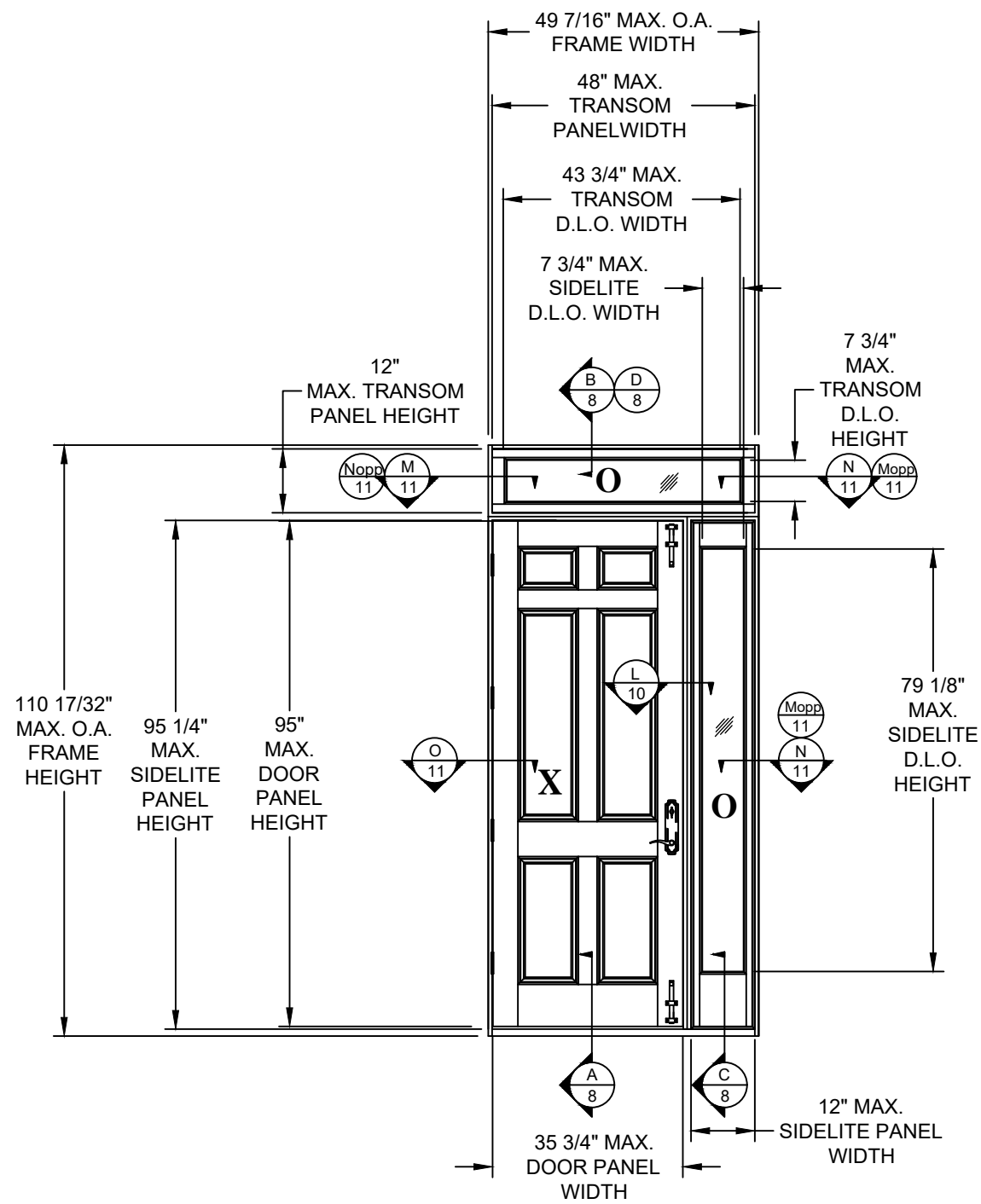
ELEVATION
 INTERIOR VIEW



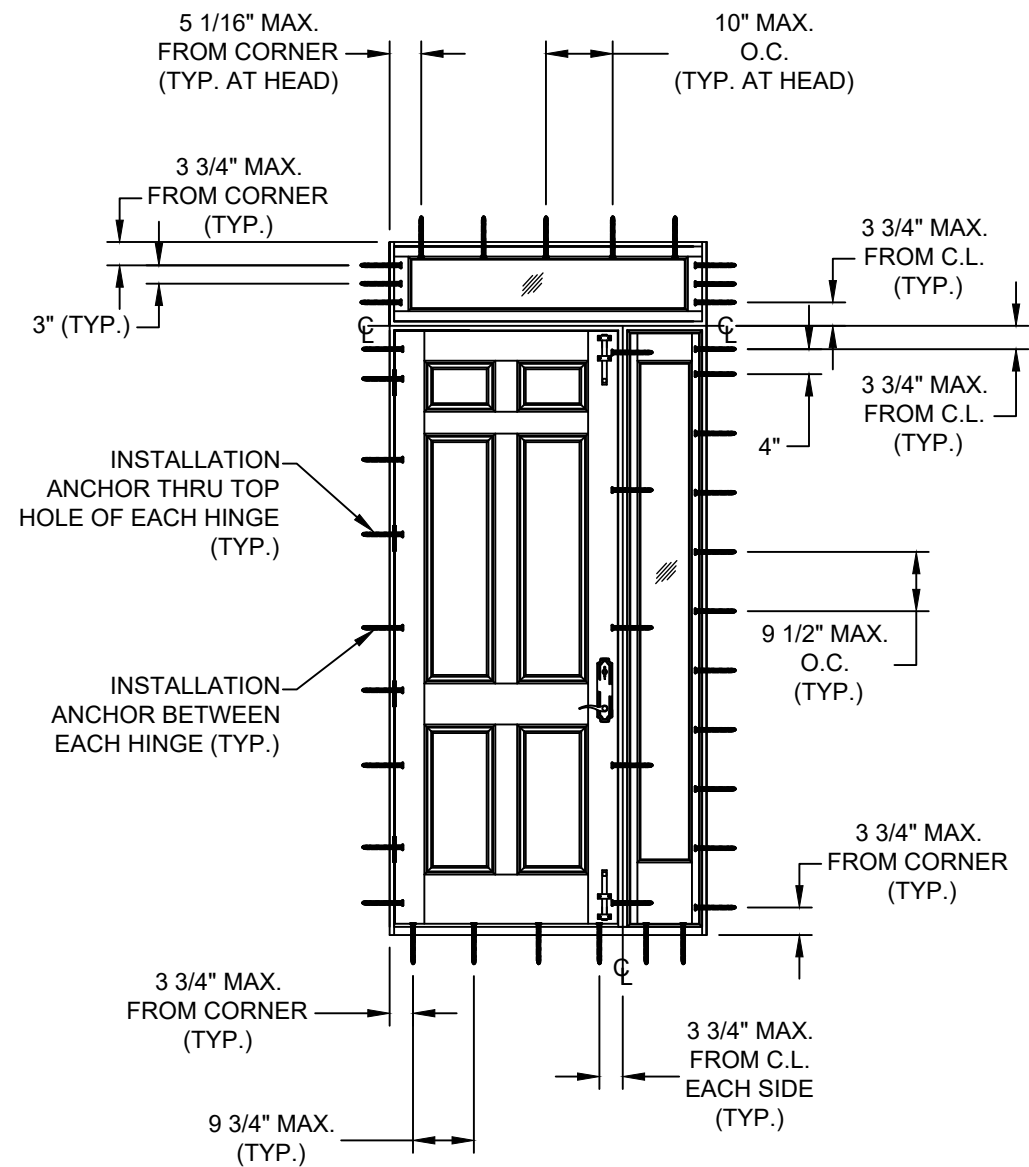
ANCHOR LAYOUT
 INTERIOR VIEW



HINGE DETAIL
 SIDE VIEW OF DOOR PANEL



ELEVATION
INTERIOR VIEW



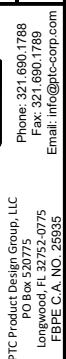
ANCHOR LAYOUT
INTERIOR VIEW

PROJECT NO. 421-0102

SIMPSON DOOR COMPANY
400 SIMPSON AVE.
MCCLEARY, WA 98557

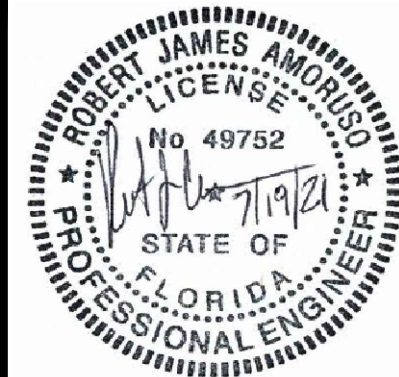
TITLE: MAHOGANY INSWING DOOR W/ & W/O SIDELITES & TRANSOM
ELEVATION & ANCHOR LAYOUT

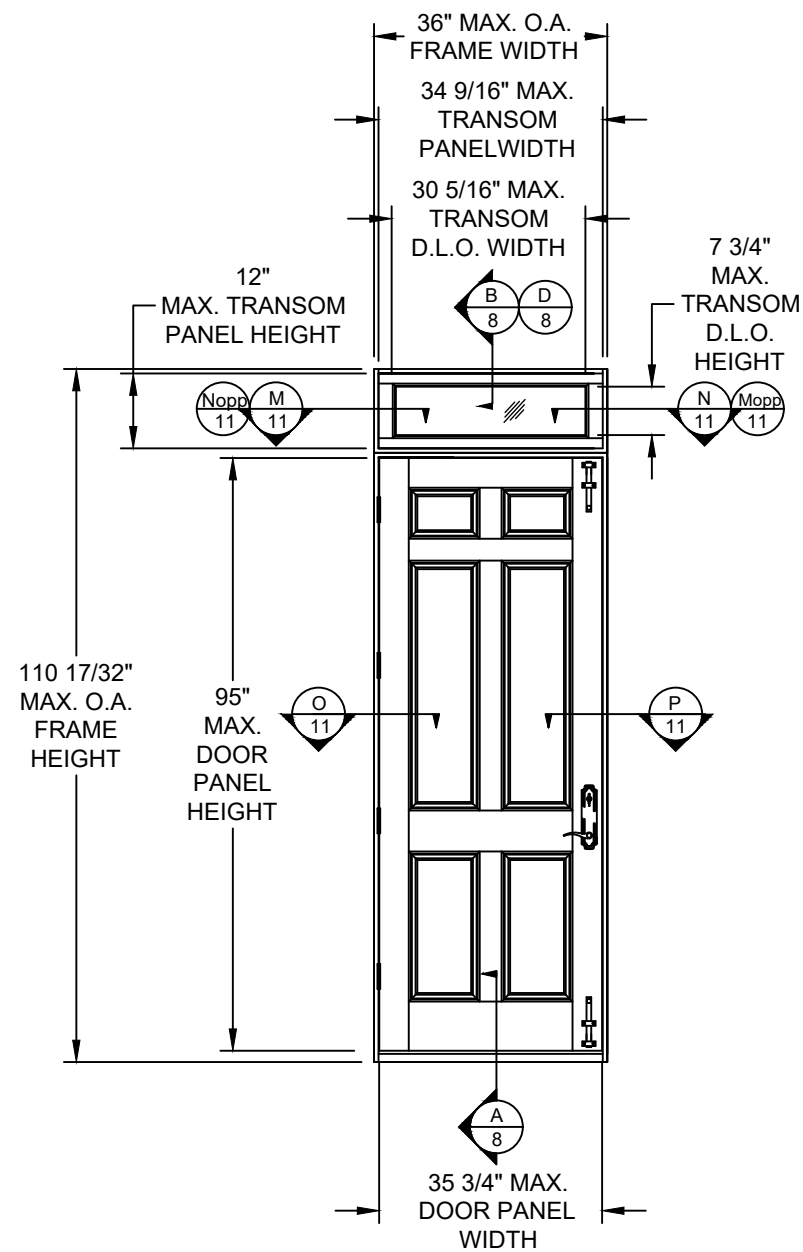
DATE:	6/18/21
DRAWING NO.:	SIMP0021
DRAWN BY:	RJA
SCALE:	N.T.S.
REV:	---
SHEET:	3 OF 11



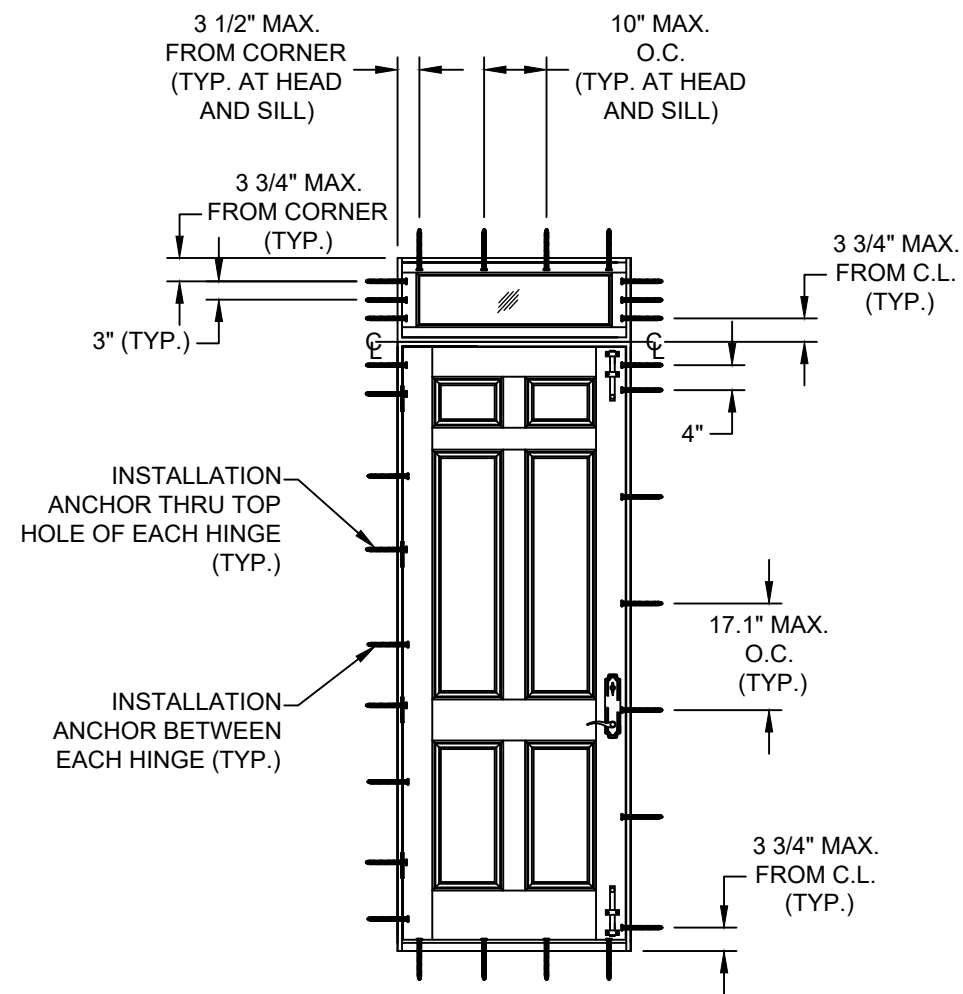
PTC Product Design Group, LLC
PO Box 520775
Longwood, FL 32752-0775
Phone: 321.690.1788
Fax: 321.690.1789
Email: info@ptc-corp.com
FBPE C.A. NO. 25935

Robert J. Amoruso, P.E.
Florida P.E. No. 49752





ELEVATION
 INTERIOR VIEW



ANCHOR LAYOUT
 INTERIOR VIEW

PROJECT NO. 421-0102

REV	DESCRIPTION	DATE	BY

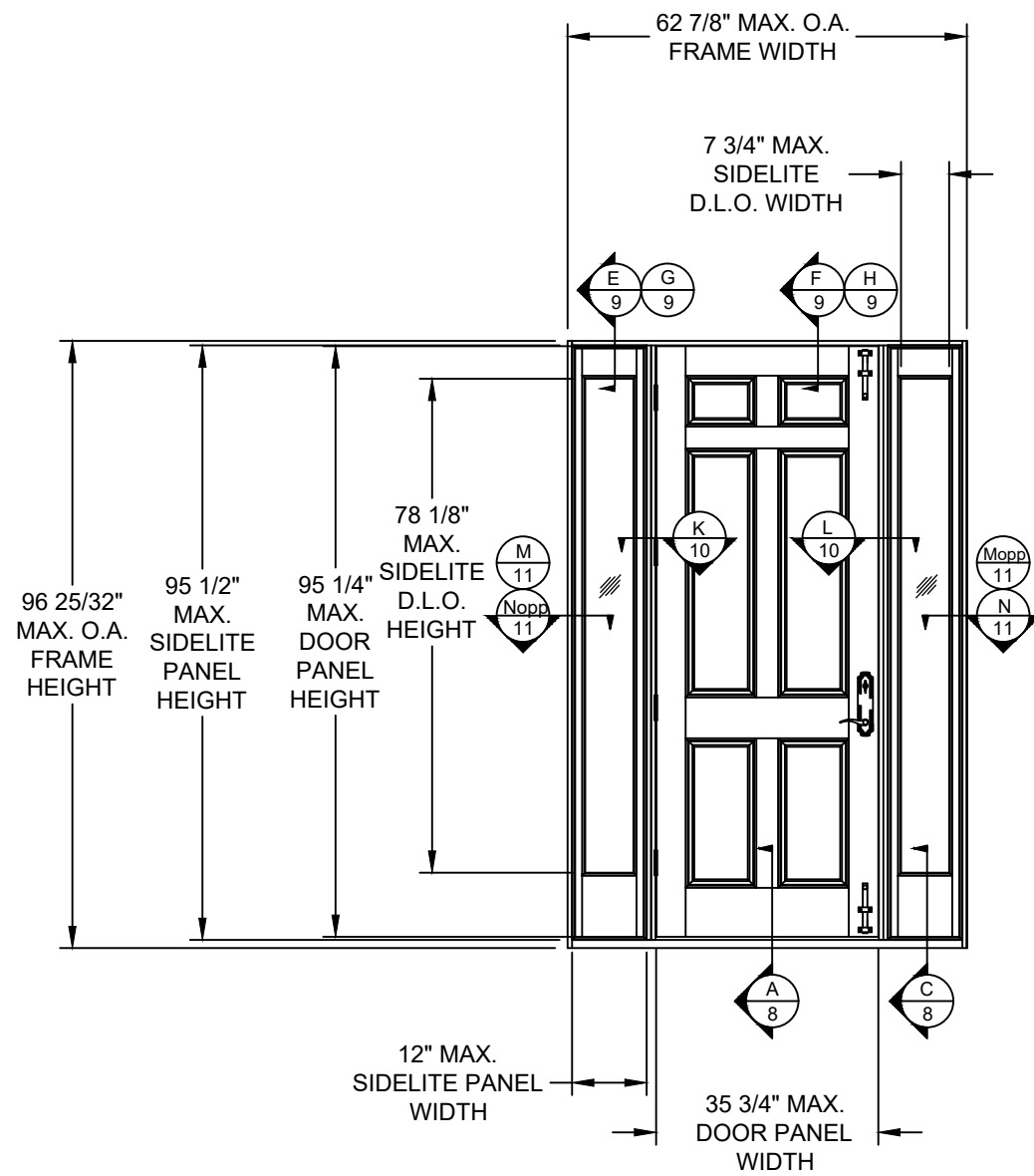
SIMPSON DOOR COMPANY
 400 SIMPSON AVE.
 MCCLEARY, WA 98557

TITLE: MAHOGANY INSWING DOOR W/ & W/O SIDELITES & TRANSOM ELEVATION & ANCHOR LAYOUT

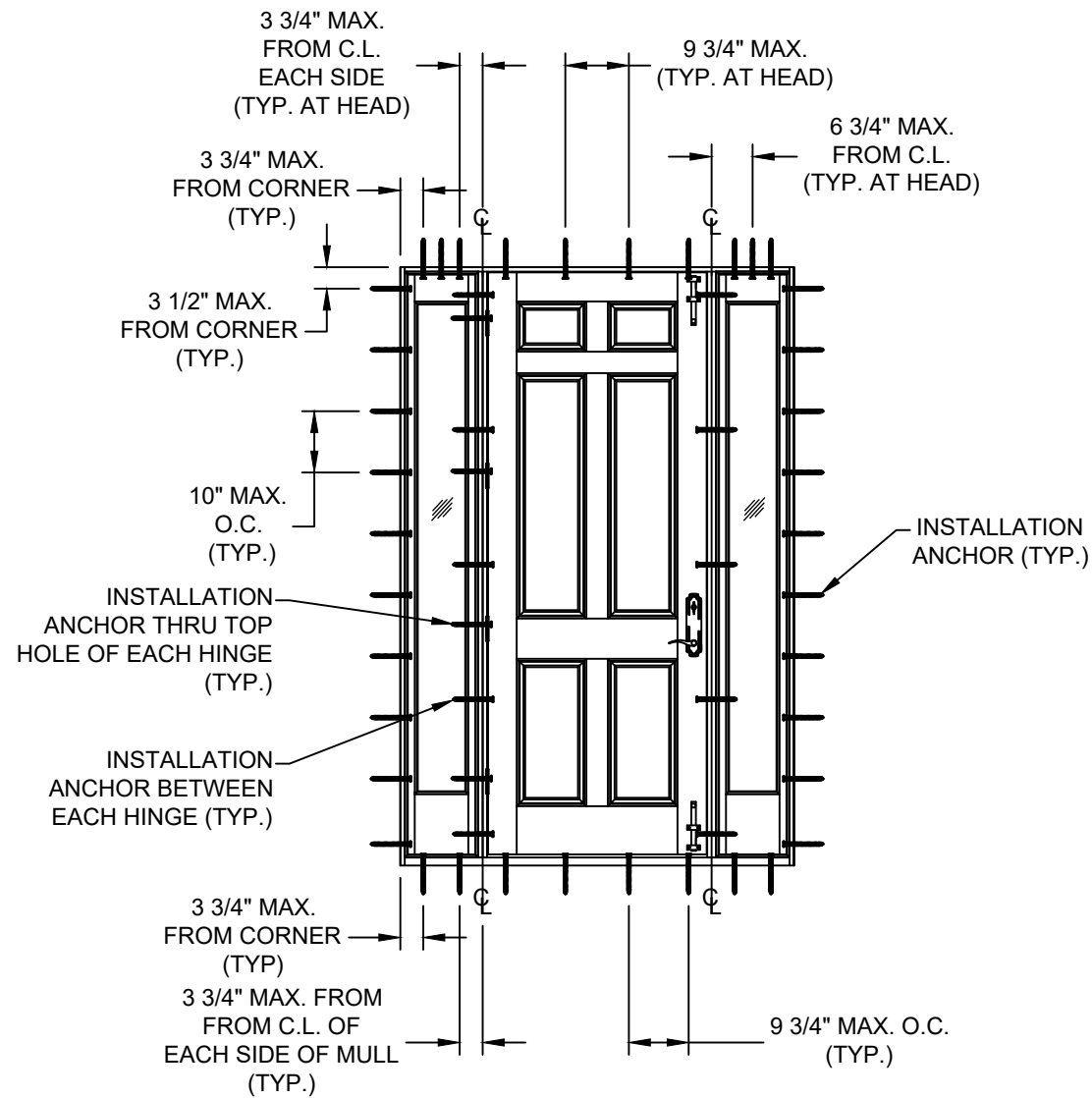
PREPARED BY: **RFI**
 PTC Product Design Group, LLC
 PO Box 520775
 Longwood, FL 32752-0775
 Phone: 321.690.1788
 Fax: 321.690.1789
 Email: info@rfi-corp.com

DATE: 6/18/21
 DRAWING NO: SIMP0021
 SCALE: N.T.S.
 SHEET: 4 OF 11

Robert J. Amoruso, P.E.
 Florida P.E. No. 49752



ELEVATION
INTERIOR VIEW



ANCHOR LAYOUT
EXTERIOR VIEW

PROJECT NO. 421-0102

SIMPSON DOOR COMPANY
400 SIMPSON AVE.
MCCLEARY, WA 98557

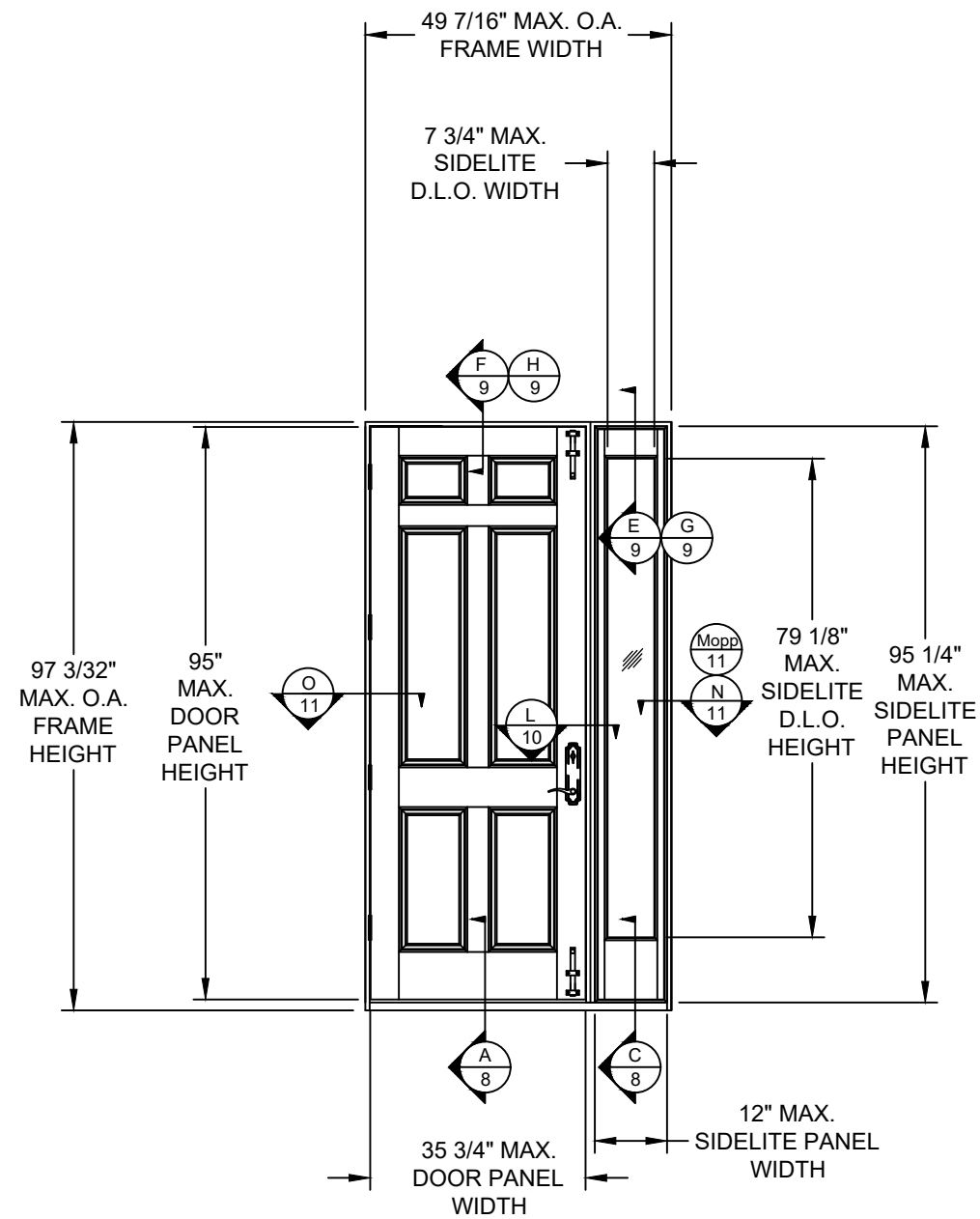
TITLE: MAHOGANY INSWING DOOR W/ & W/O SIDELITES & TRANSOM
ELEVATION & ANCHOR LAYOUT

DATE:	6/18/21
DRAWING NO.:	SIMP0021
SCALE:	N.T.S.
SHEET:	5 OF 11
REV:	---

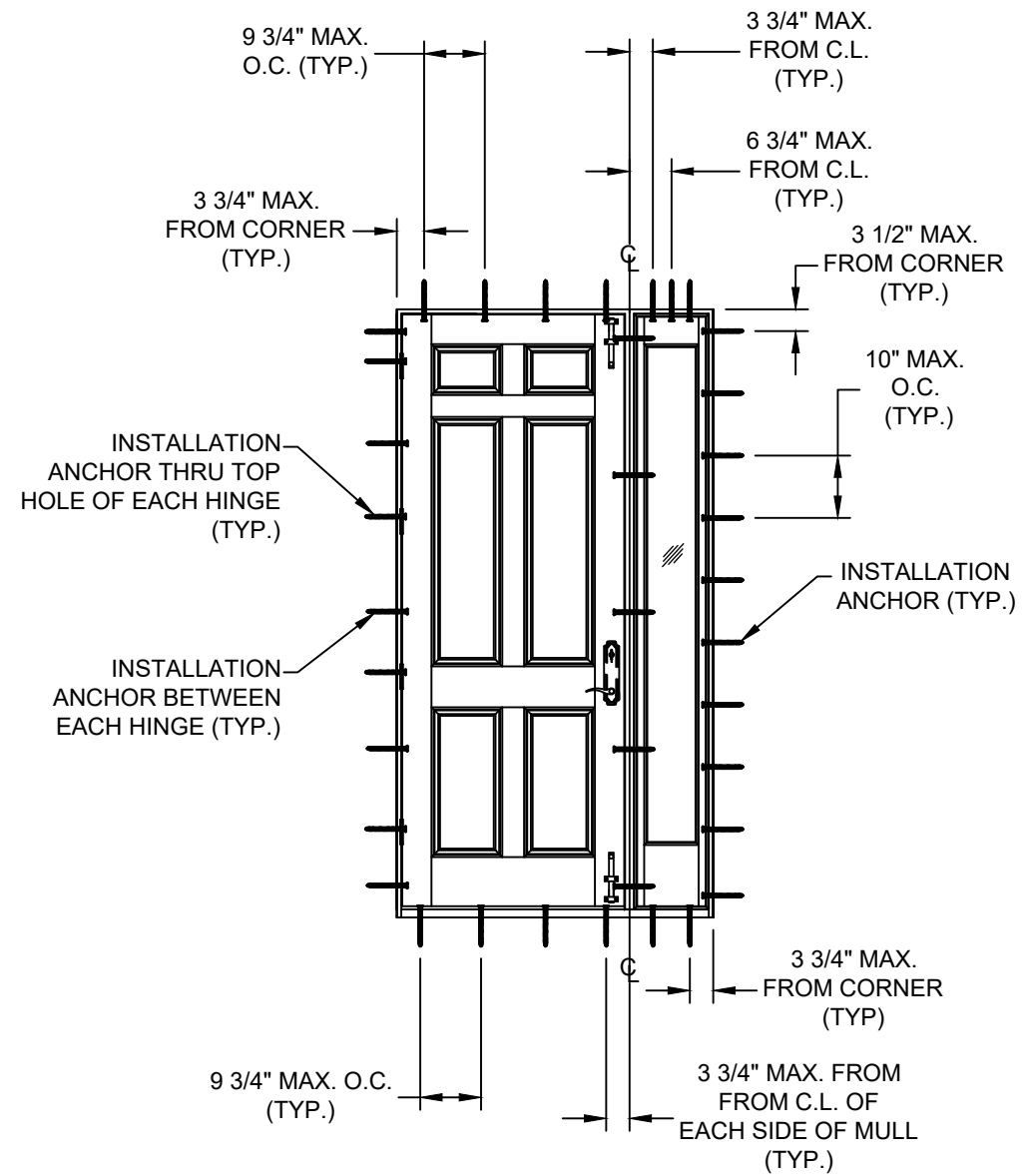


Robert J. Amoruso, P.E.
Florida P.E. No. 49752





ELEVATION
INTERIOR VIEW



ANCHOR LAYOUT
INTERIOR VIEW

PROJECT NO. 421-0102

REV	DESCRIPTION	DATE	BY

SIMPSON DOOR COMPANY
400 SIMPSON AVE.
MCCLEARY, WA 98557

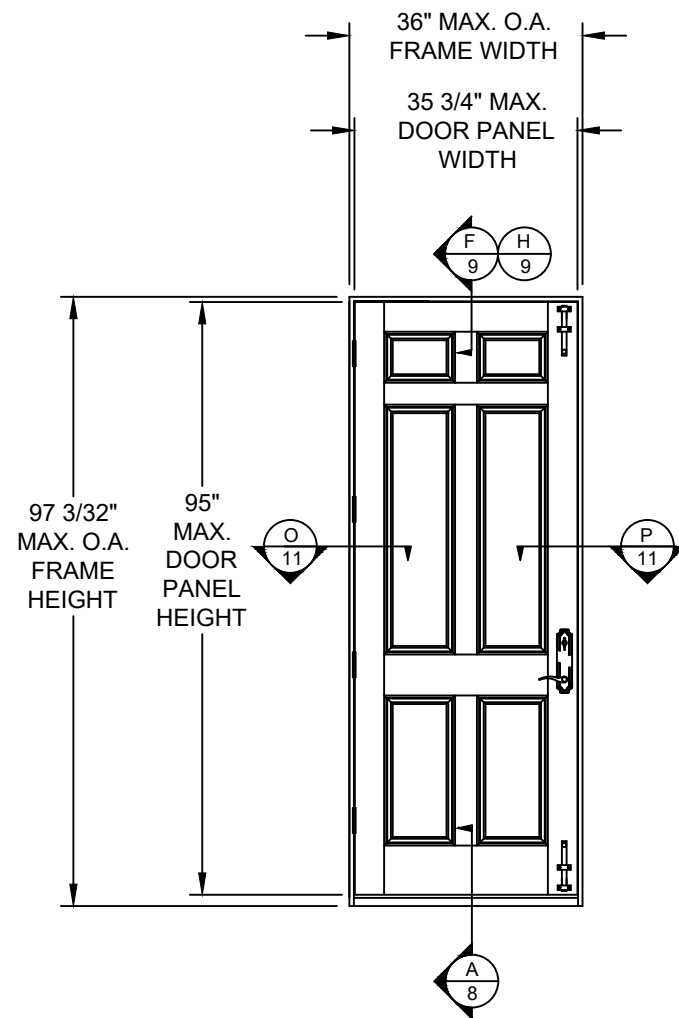
TITLE: MAHOGANY INSWING DOOR W/ & W/O SIDELITES & TRANSOM
ELEVATION & ANCHOR LAYOUT

PREPARED BY: PTC Product Design Group, LLC
PO Box 520775
Longwood, FL 32752-0775
Phone: 321.690.1788
Fax: 321.690.1789
Email: info@ptc-corp.com
FBPE C.A. NO. 25935

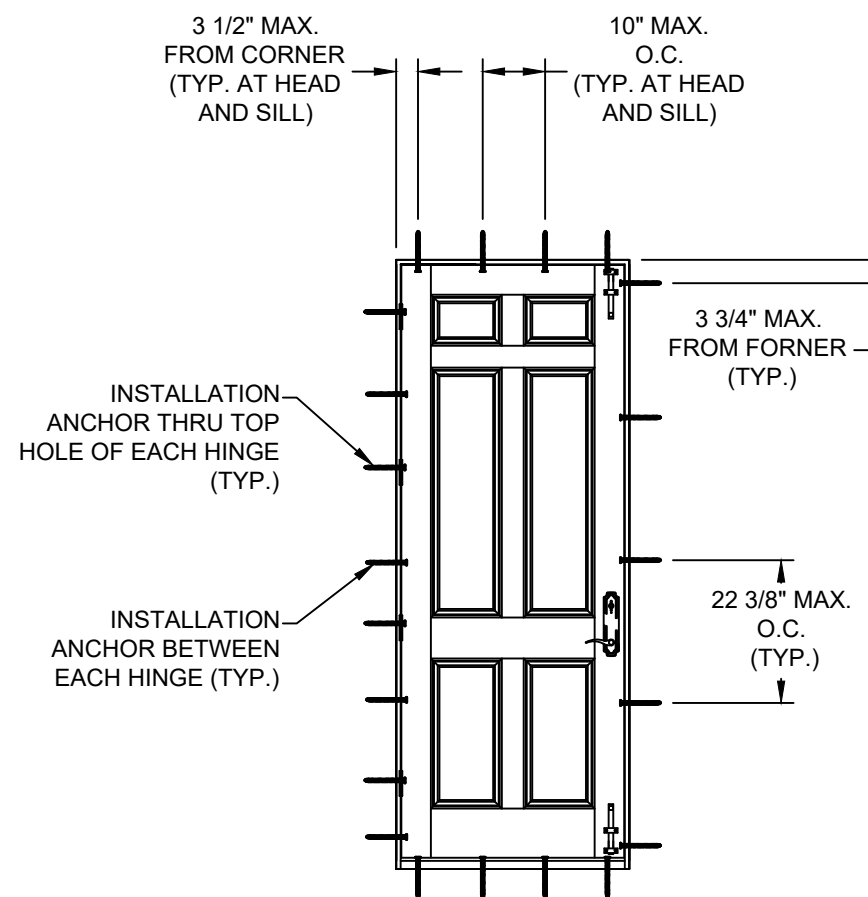
DATE: 6/18/21
DRAWING NO.: SIMP0021
SHEET: 6 OF 11

DRAWN BY: RJA
SCALE: N.T.S.
REV: ---

Robert J. Amoruso, P.E.
Florida P.E. No. 49752



ELEVATION
INTERIOR VIEW



ANCHOR LAYOUT
INTERIOR VIEW

PROJECT NO. 421-0102

SIMPSON DOOR COMPANY
400 SIMPSON AVE.
MCCLEARY, WA 98557

TITLE: MAHOGANY INSWING DOOR W/ & W/O SIDELITES & TRANSOM
ELEVATION & ANCHOR LAYOUT

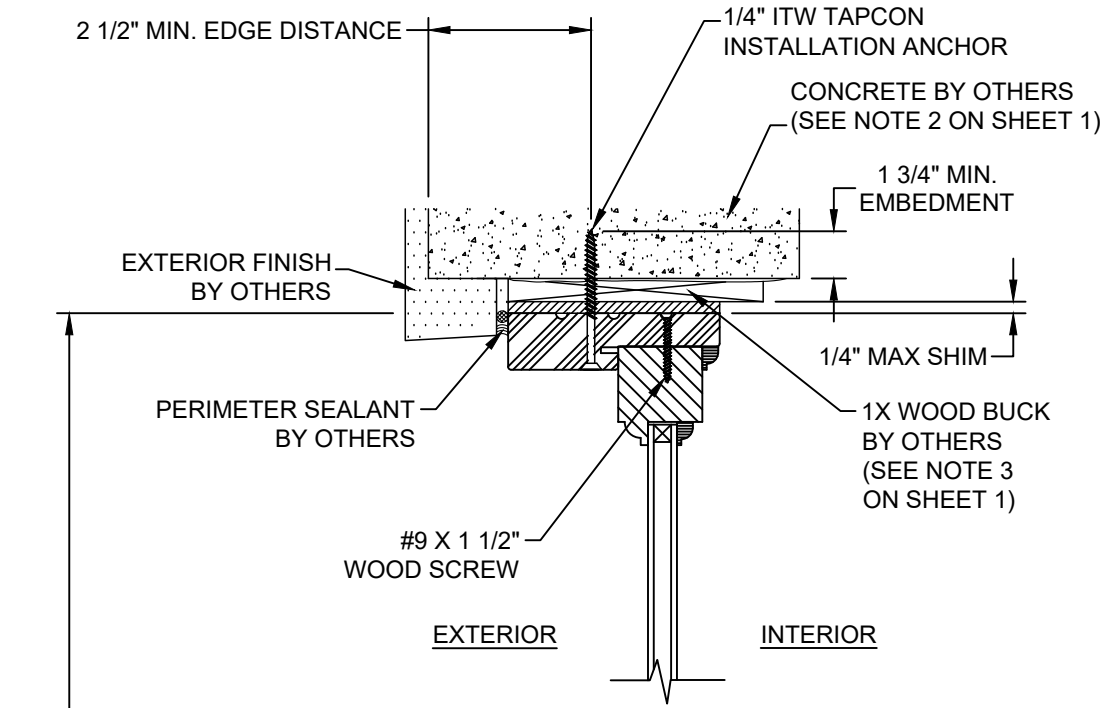
DATE:	6/18/21
DRAWING NO.:	SIMP0021
SHEET:	7 OF 11
DRAWN BY:	RJA
SCALE:	N.T.S.
REV:	---



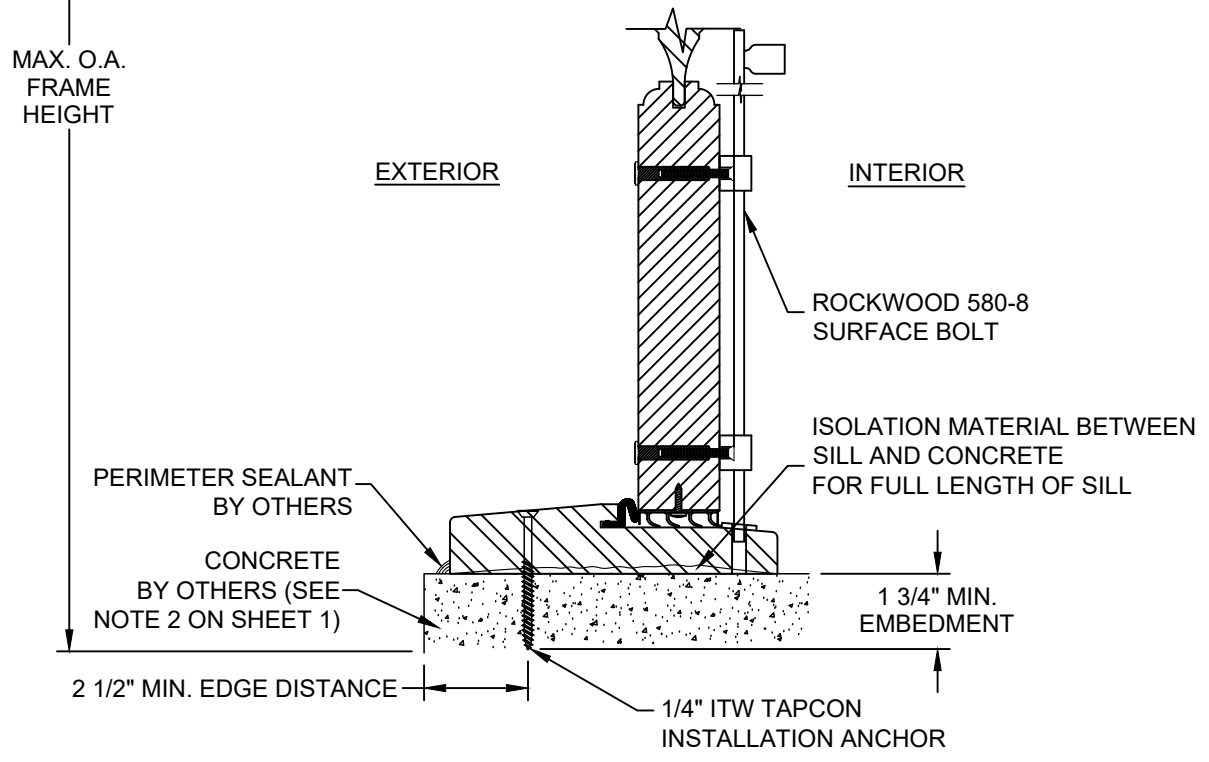
Robert J. Amoruso, P.E.
Florida P.E. No. 49752



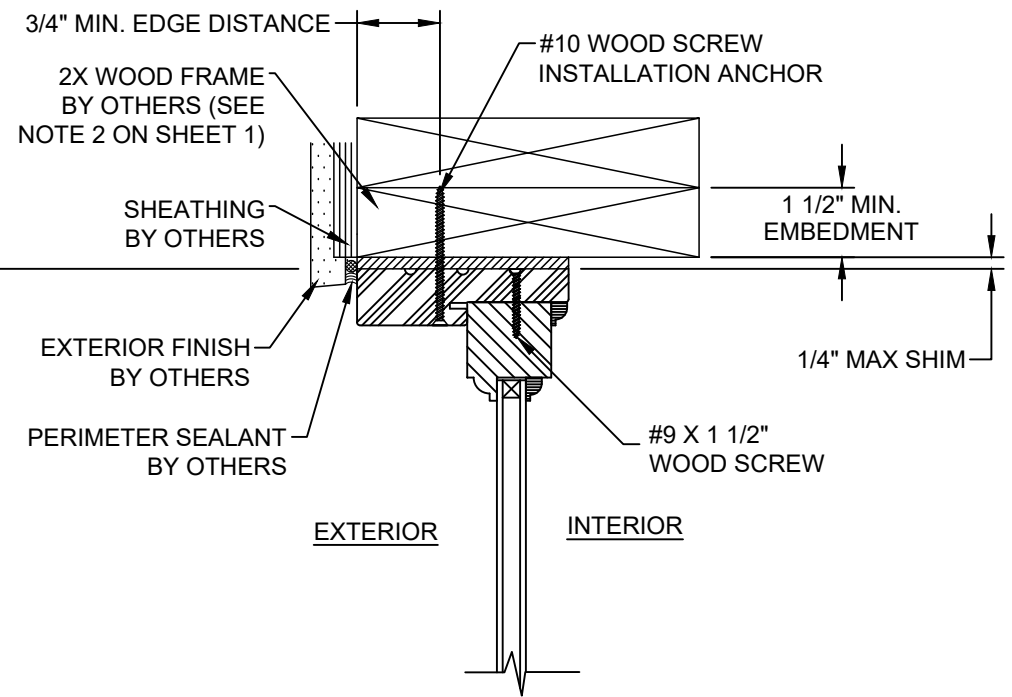
REV	DESCRIPTION	DATE	BY



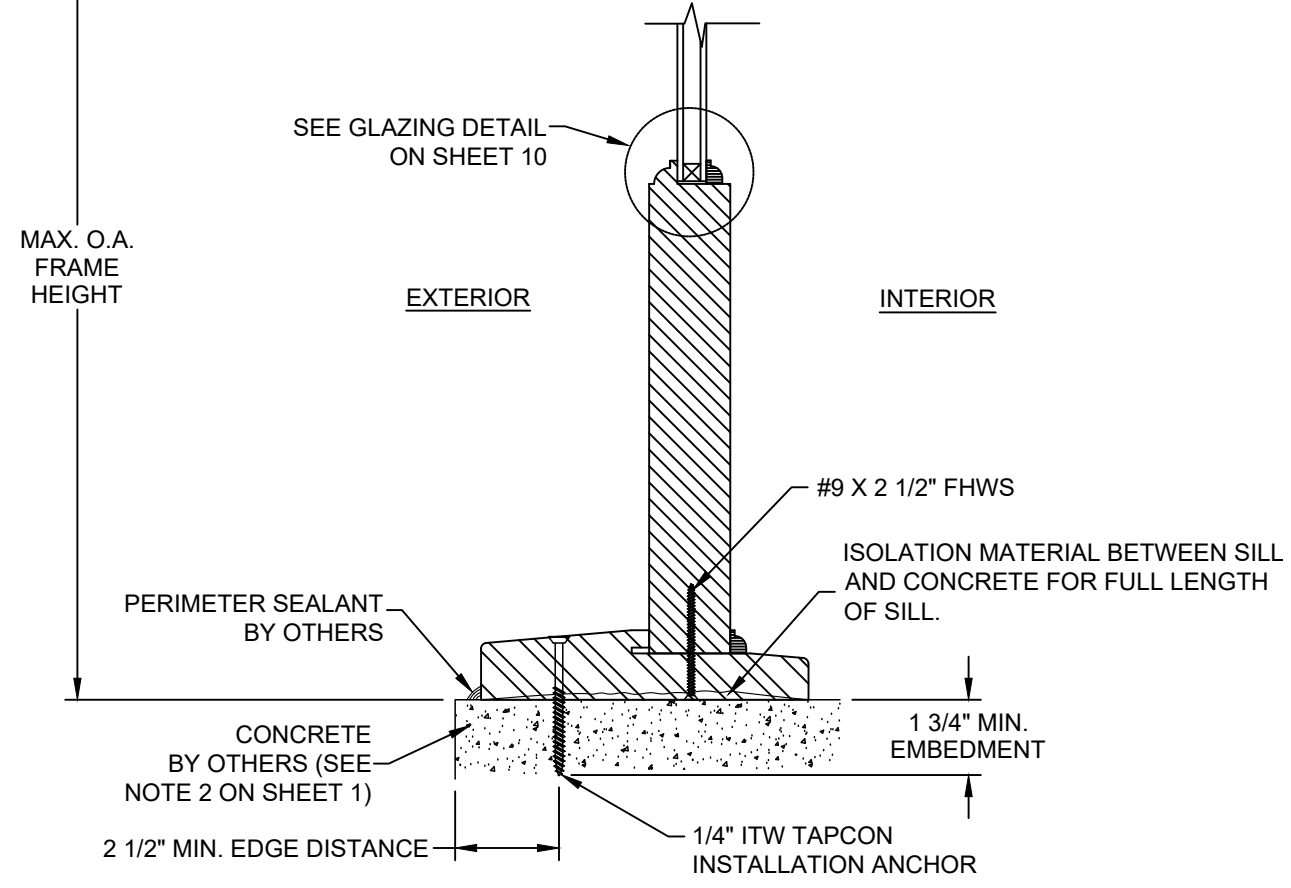
B VERTICAL SECTION
CONCRETE SUBSTRATE
TRANSOM AT HEAD



A VERTICAL SECTION
CONCRETE SUBSTRATE
DOOR PANEL AT SILL



D VERTICAL SECTION
WOOD SUBSTRATE
TRANSOM AT HEAD



C VERTICAL SECTION
CONCRETE SUBSTRATE
SIDELITE AT SILL

PROJECT NO. 421-0102

REV	DESCRIPTION	DATE	BY

SIMPSON DOOR COMPANY
400 SIMPSON AVE.
MCCLEARY, WA 98557

TITLE: MAHOGANY INSWING DOOR W/ & W/O SIDELITES & TRANSOM
VERTICAL SECTIONS

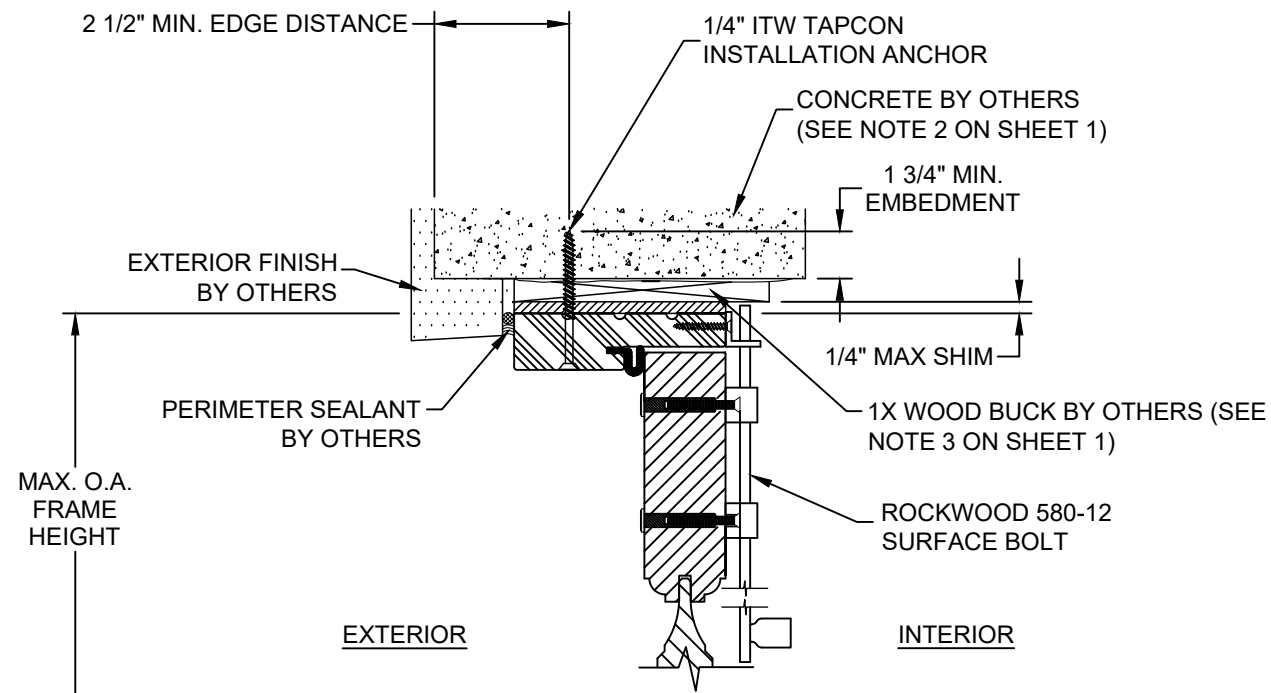
DATE: 6/18/21
DRAWING NO.: SIMP0021
SHEET: 8 OF 11

DRAWN BY: RJA
SCALE: N.T.S.
REV: ---

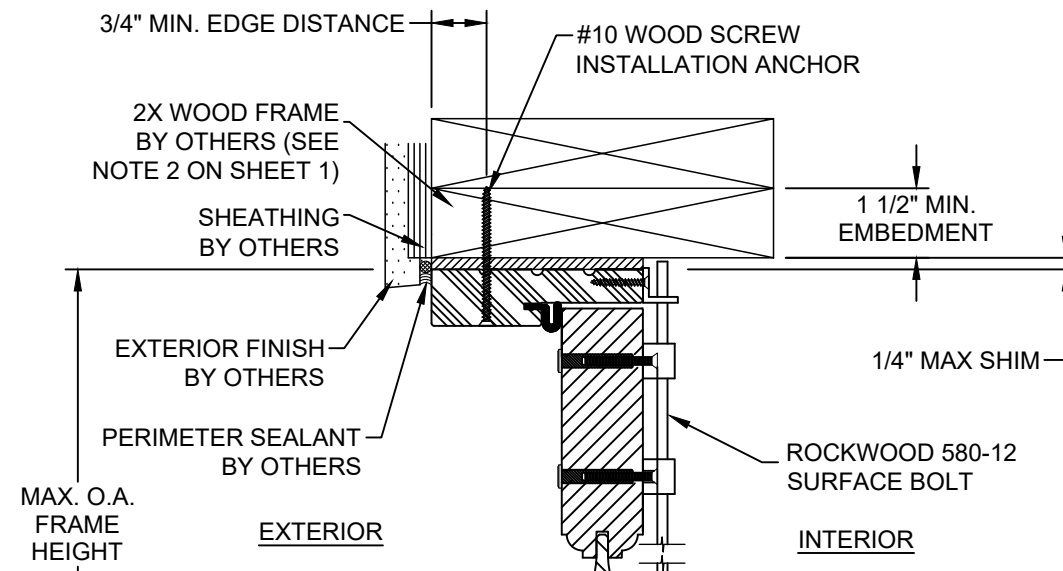
PREPARED BY: **FE**

PTC Product Design Group, LLC
PO Box 320775
Longwood, FL 32752-0775
Phone: 321.690.1788
Fax: 321.690.1789
Email: info@ptc-corp.com
FBPE C.A. NO. 25935

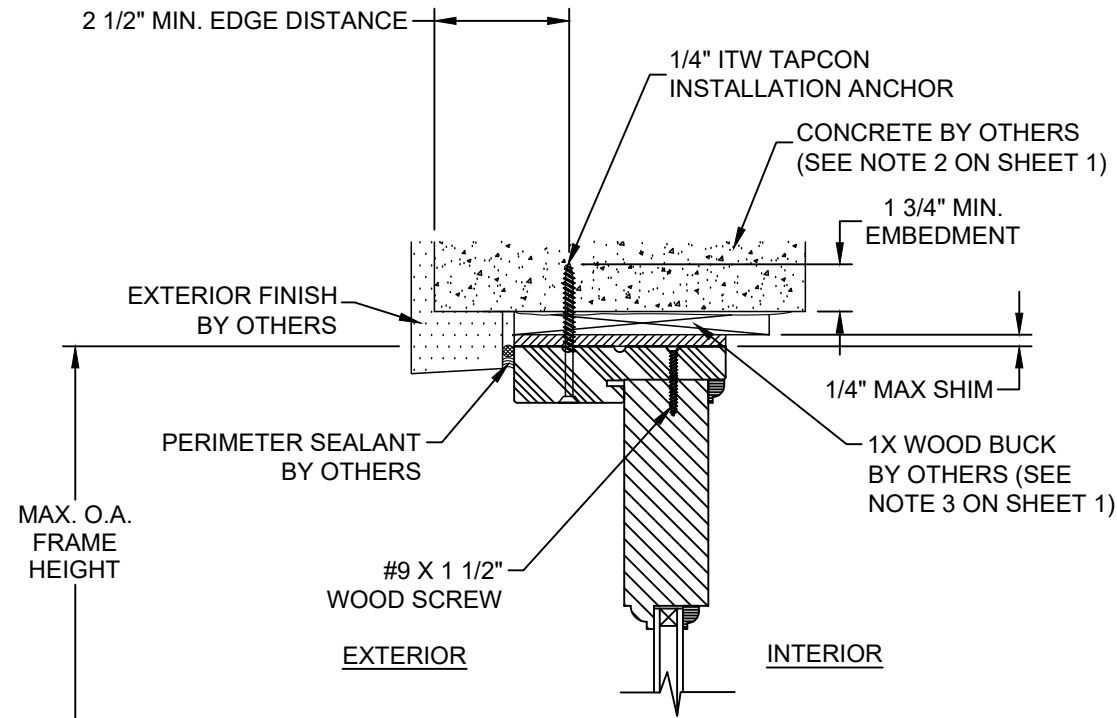
Robert J. Amoruso, P.E.
Florida P.E. No. 49752



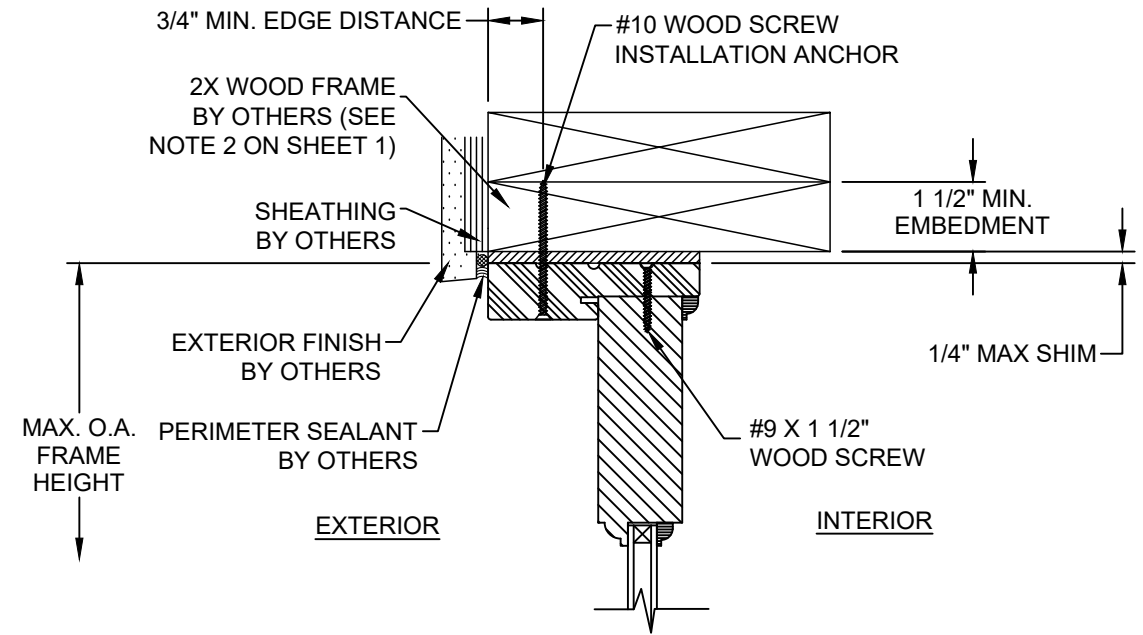
F VERTICAL SECTION
CONCRETE SUBSTRATE
DOOR PANEL AT HEAD



H VERTICAL SECTION
WOOD SUBSTRATE
DOOR PANEL AT HEAD



E VERTICAL SECTION
CONCRETE SUBSTRATE
SIDELITE PANEL AT HEAD



G VERTICAL SECTION
WOOD SUBSTRATE
SIDELITE PANEL AT HEAD

PROJECT NO. 421-0102

REV	DESCRIPTION	DATE	BY

SIMPSON DOOR COMPANY
400 SIMPSON AVE.
MCCLEARY, WA 98557

TITLE: MAHOGANY INSWING DOOR W/ & W/O SIDELITES & TRANSOM
VERTICAL SECTIONS

DATE:	6/18/21
DRAWING NO.:	SIMP0021
SHEET:	9 OF 11
DRAWN BY:	RJA
SCALE:	N.T.S.
REV:	---

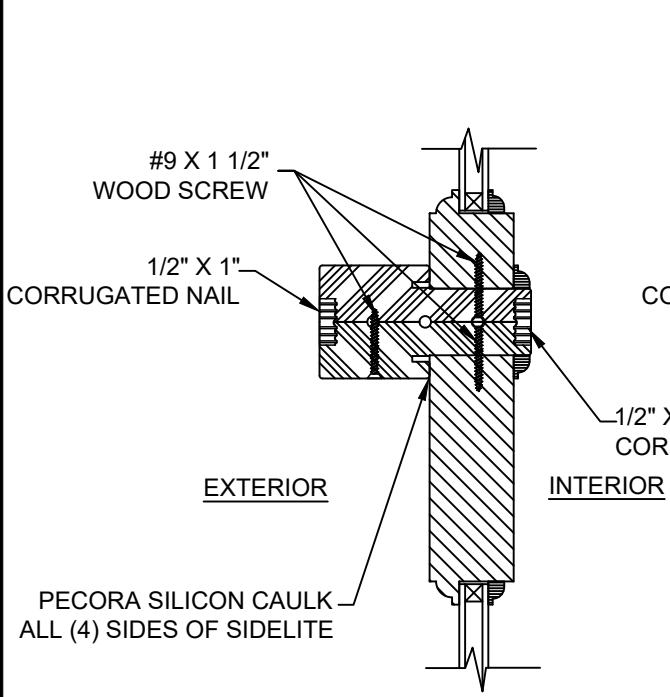
PREPARED BY: **RFI**

PTC Product Design Group, LLC
PO Box 520775
Longwood, FL 32752-0775
Phone: 321.690.1788
Fax: 321.690.1789
Email: info@ptc-corp.com
FBPE C.A. NO. 25935

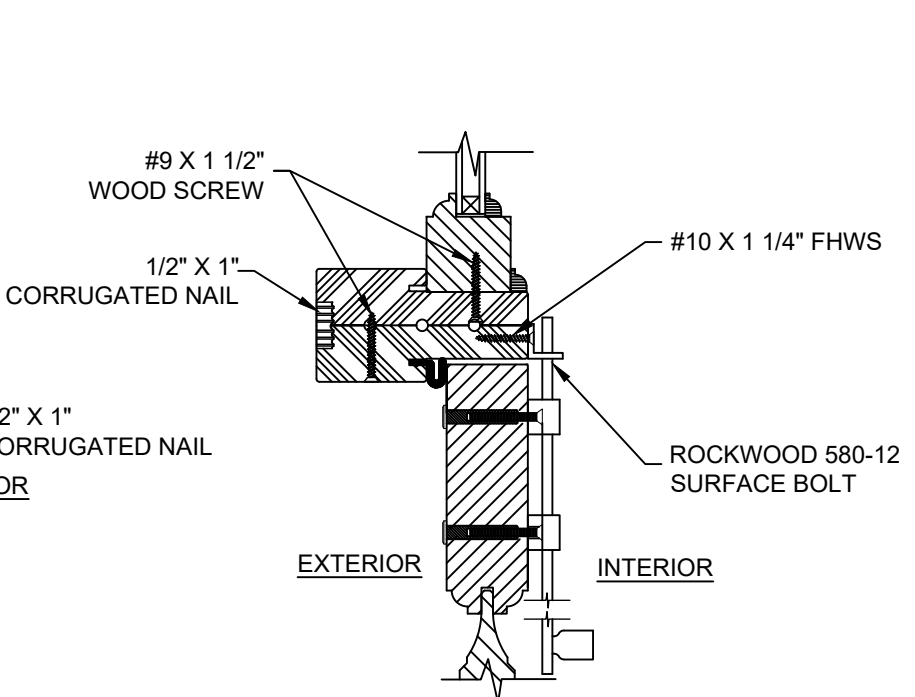
Robert J. Amoruso, P.E.
Florida P.E. No. 49752

PROJECT NO. 421-0102		BY
		DATE
		DESCRIPTION
		REV

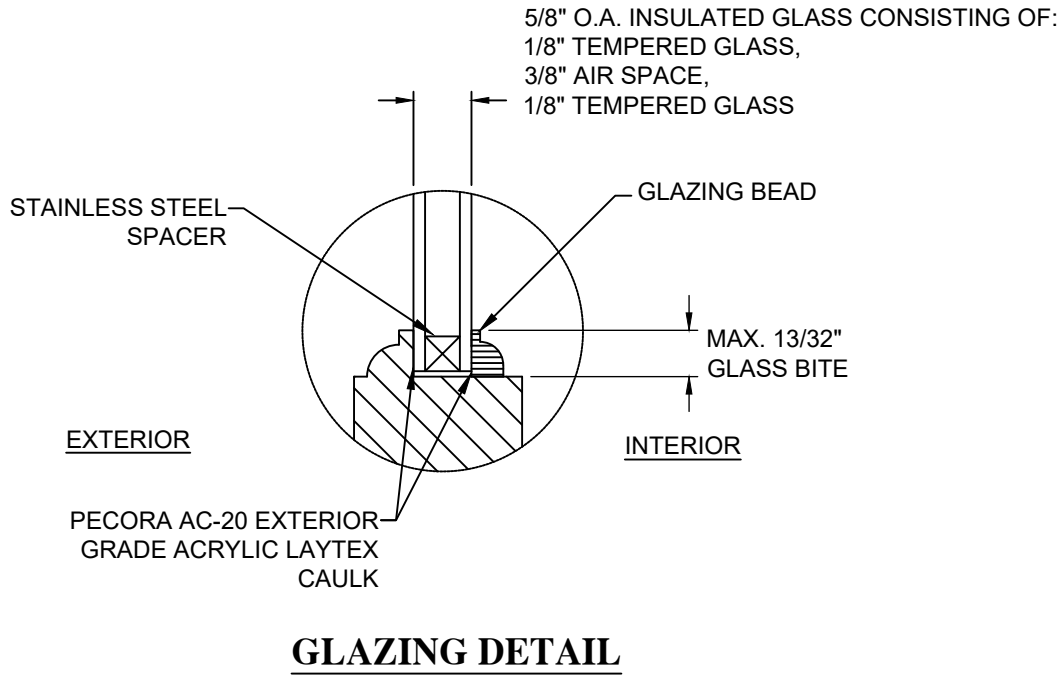
SIMPSON DOOR COMPANY 400 SIMPSON AVE. MCCLEARY, WA 98557		DATE: 6/18/21
TITLE: MAHOGANY INSWING DOOR W/ & W/O SIDELITES & TRANSOM VERTICAL & HORIZONTAL SECTIONS, GLAZING DETAIL		DRAWING NO: SIMP0021
DRAWN BY: RJA	SCALE: N.T.S.	SHEET: 10 OF 11
PREPARED BY:		
PTC Product Design Group, LLC PO Box 520775 Longwood, FL 32752-0775 Phone: 321.690.1788 Fax: 321.690.1789 Email: info@ptc-corp.com FBPE C.A. NO. 25935		



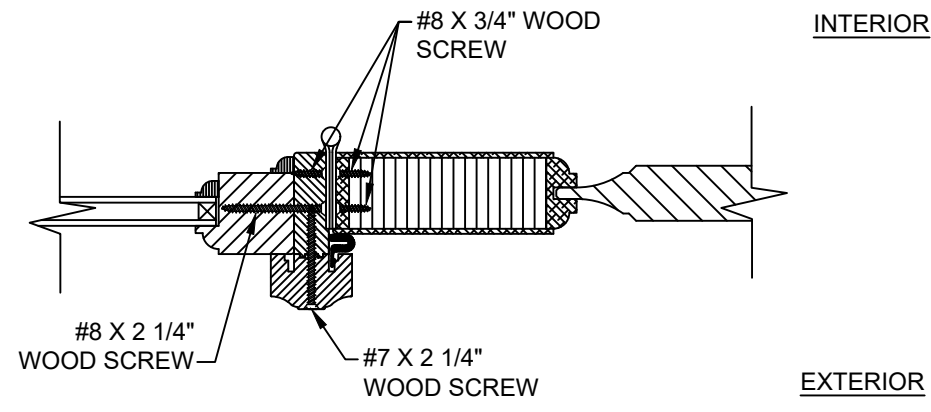
I VERTICAL SECTION
DOUBLE JAMB HORIZONTAL MULL
AT SIDELITE PANEL



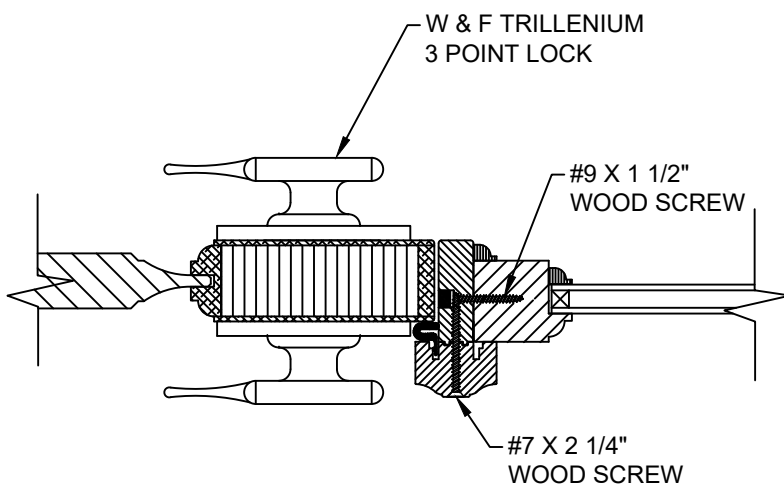
J VERTICAL SECTION
DOUBLE JAMB HORIZONTAL MULL
AT DOOR PANEL



GLAZING DETAIL

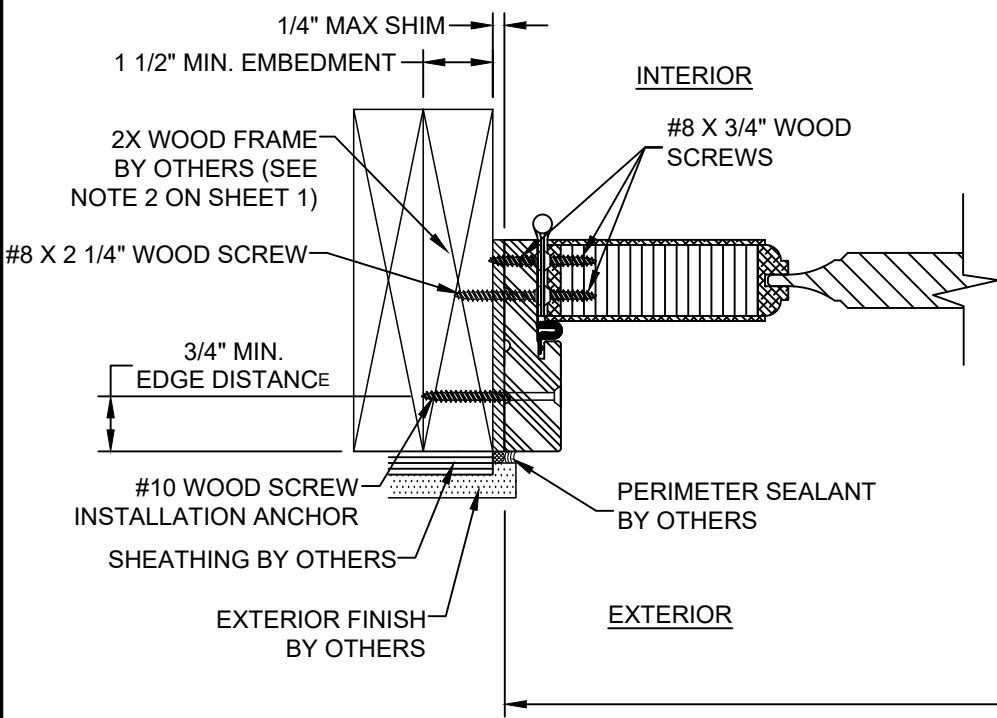


K HORIZONTAL SECTION
HINGE STILE AT VERTICAL MULL

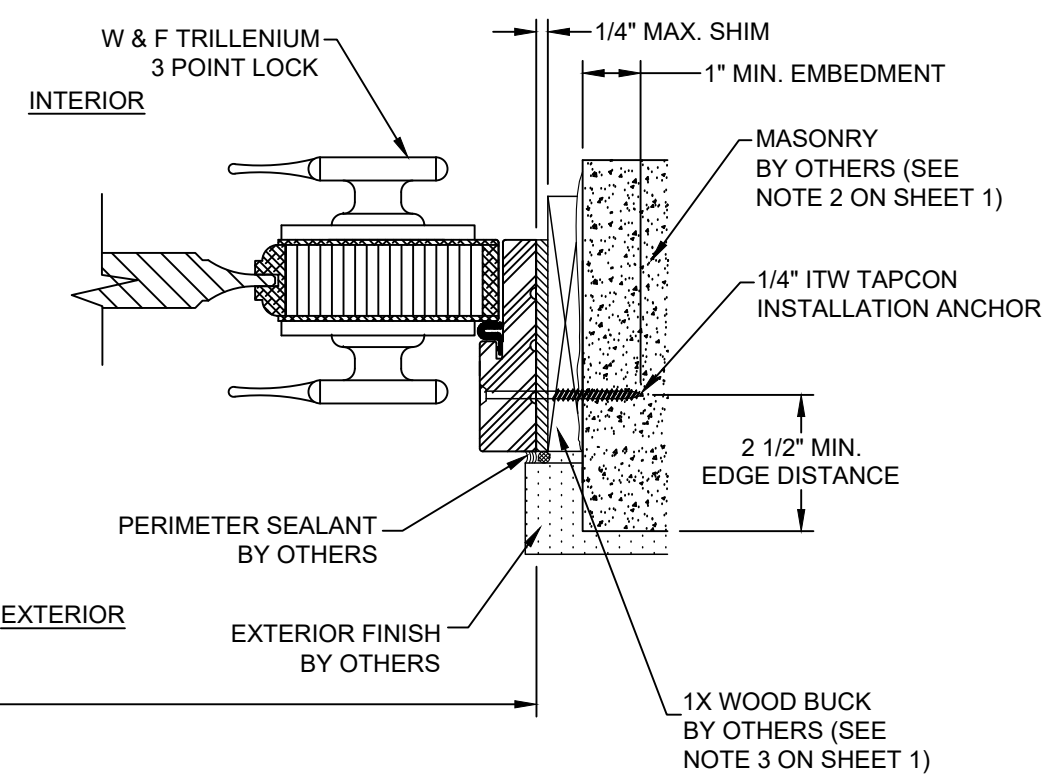


L HORIZONTAL SECTION
LOCK STILE AT VERTICAL MULL

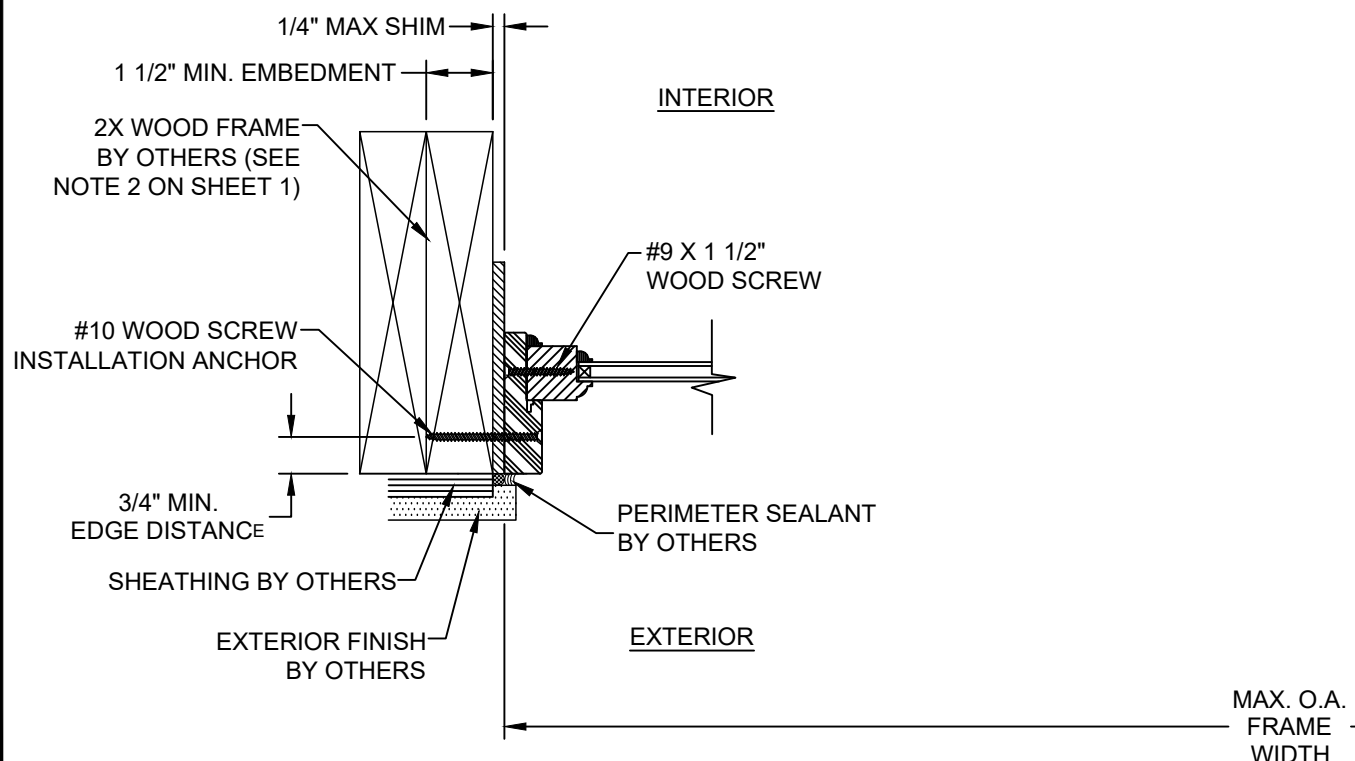
Robert J. Amoruso, P.E.
Florida P.E. No. 49752



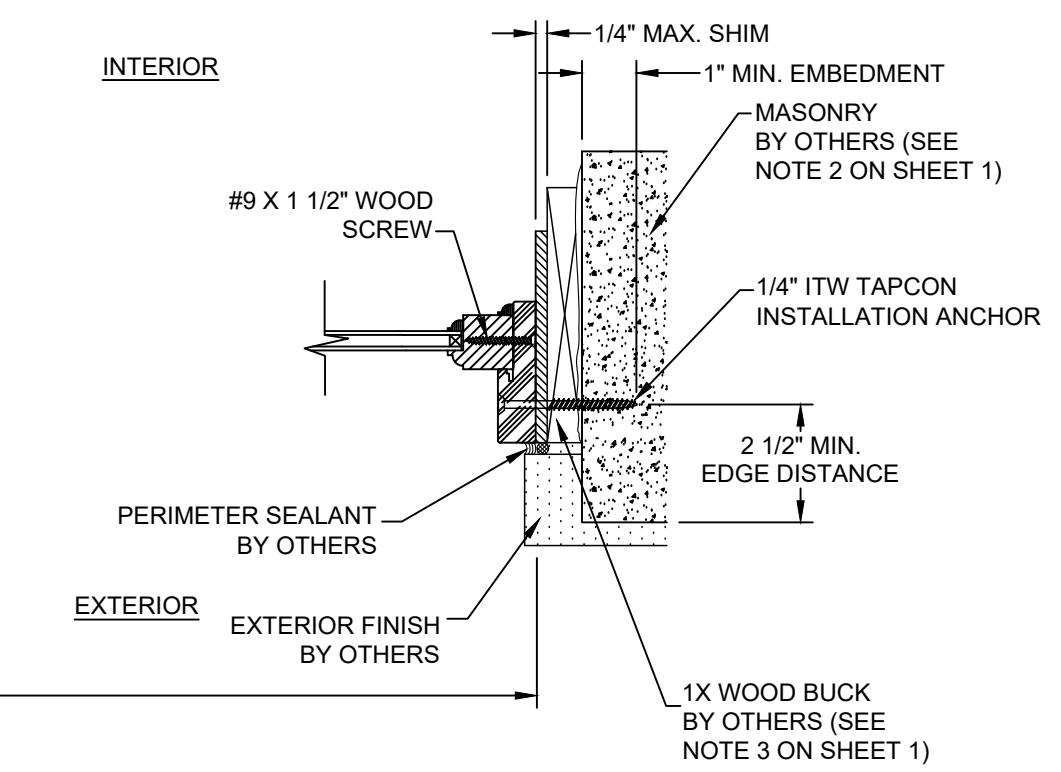
O HORIZONTAL SECTION
WOOD SUBSTRATE
DOOR PANEL AT HINGE STILE JAMB



P HORIZONTAL SECTION
MASONRY SUBSTRATE
DOOR PANEL AT LOCK STILE JAMB



M HORIZONTAL SECTION
WOOD SUBSTRATE
SIDELITE AND TRANSOM JAMBS



N HORIZONTAL SECTION
MASONRY SUBSTRATE
SIDELITE AND TRANSOM JAMBS

PROJECT NO. 421-0102		DATE	BY
		DESCRIPTION	REV
SIMPSON DOOR COMPANY 400 SIMPSON AVE. MCCLEARY, WA 98557 TITLE: MAHOGANY INSWING DOOR W/ & W/O SIDELITES & TRANSOM HORIZONTAL SECTIONS		DATE: 6/18/21 DRAWING NO.: SIMP0021 SHEET: 11 OF 11	
DRAWN BY: RJA SCALE: N.T.S. REV: ---			
PREPARED BY: FBPE PTC Product Design Group, LLC PO Box 520775 Longwood, FL 32752-0775 Phone: 321.690.1788 Fax: 321.690.1789 Email: info@fbpe-corp.com			

Robert J. Amoruso, P.E.
Florida P.E. No. 49752